



MAITLAND-SMITH®

Lighting & Accessories



CONTENTS

| | |
|-------------------------------|----|
| History & Craftsmanship | 1 |
| Lamps | 5 |
| Sconces | 15 |
| Floor Lamps | 19 |
| Boxes | 21 |
| Functional Accessories | 29 |
| Decorative Accessories | 49 |
| Wall Decor | 65 |
| Mirrors | 66 |
| Index | 81 |





For over four decades, Maitland-Smith has been creating exquisite and unique decorative accessories, lighting, elegant mirrors and accent furniture.

Founded by a London antiques dealer with the eye of a connoisseur, Maitland-Smith has carried on the tradition of creating stunning accents for the home of the highest quality.

From the beginning, our many workrooms have been artisan based and employ time-honored techniques developed before the machine age. Many of these skills date back to the world's earliest civilizations and are associated with fine quality furniture and decorative arts.

Maitland-Smith is well-known for many hand-crafted specialties, including hand carved tropical mahogany, hand cut and inlaid exotic wood veneers, lost wax cast metal mounts and decorative objects, as well as, traditional vegetable tanned and hand-tooled leather. We draw inspiration from great works from the 18th, 19th, 20th and 21st centuries. We work in design collaboration with design partners for Tony Duquette Studios and its president, Hutton Wilkinson and also Celerie Kemble, Susan Hable Smith.

We invite you to explore our nearly endless furniture, lighting and accessory collections.

LOST WAX CASTING

From its inception, the technique of lost wax casting has remained the preferred process of jewelers, sculptors and artisans. The process was developed by the Greeks and Romans and has remained in use since its beginning. The many-step technique begins with a finely carved wax model. This wax model is then surrounded by a special form of concrete which is extremely fine in consistency. This allows the concrete to capture all the detail of the original wax version.

As the concrete dries, two different holes are carved into the material to facilitate casting. The mold is then allowed to harden and cure.

The concrete mold is then filled with molten metal, which in turn melts the original wax model which drains away using a narrow exit hole. When the mold cools, it is broken open to reveal a finely cast metal object which was once wax. It is at this point a hand applied finish is added. Among our most popular finishes are verdigris, aged brass, dark bronze and burnished bronze. All Maitland-Smith castings are molded in brass and other fine metals.



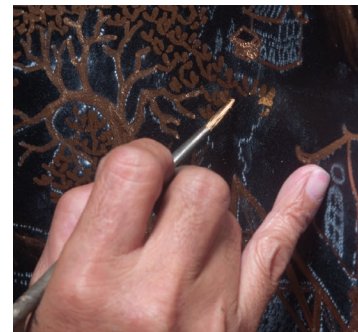
HAND PAINTING

Our artisans continue the skills of the 17th and 18th century's ateliers. Hand painting is undeniably among these traditional crafts.

Unlike machine aided copies or replicas, original work like hand painting is regarded as a unique expression of an artisan and of greater value.

The talented artisans in our ateliers possess the painting skills of their 18th-century counterparts. Attributes like attention to detail and eye-hand coordination are key.

Technical virtuosity is the personal signature of the artist. An expertly handled brush can make techniques like dry-brushing, color blending and feathering seem effortless and original.



HAND CARVED WOOD



Perhaps the most demanding skill in the rich tradition of craftsmanship is hand carving. Archeologists can date early surviving examples over three thousand years old. Fantastic wooden objects have been uncovered in Egyptian tombs alongside jewel encrusted gold and silver artifacts. Other examples date from the Middle Ages, primarily ecclesiastical figures.



The Renaissance was the setting for the reawakening of the decorative arts. Specialized guilds of artisans were formed to advance and protect particular skills. Carvers guilds arose throughout Europe alongside goldsmiths, jewelers and other similar trades.

The richly ornamental styles of the 17th and 18th centuries are a testament to the caliber of craftsmanship available. Our carvers use the same tools and techniques as their 18th-century counterparts. After years of training, their skills are applied to a wide variety of Maitland-Smith items. Examples include our hand carved mahogany dining chairs, occasional chairs, mirror frames and numerous decorative objects.

MARQUETRY & PARQUETRY



As highly regarded traditional furniture crafts, these handcrafted inlay processes began in Germany and Holland.



In the hands of a trained artisan, shaped veneered wood or other suitable material is applied to a furniture frame, forming a mosaic-like pattern or image on the surface.



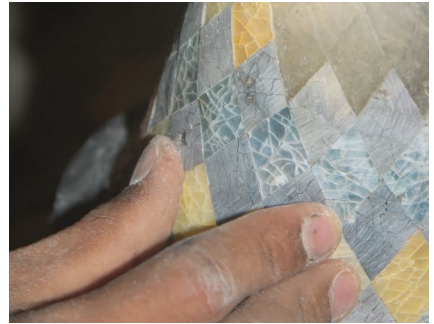
Marquetry may be floral, or an arabesque, but it must be curvilinear. If the pattern is geometric, it is called parquetry. Both are traditional decorative techniques which add intrinsic value to fine furniture. By the 17th century marquetry in particular reached new heights of skill and innovation, and was prized by patrons of the era. The use of the process was further advanced by the importation of rare and exotic woods from around the world, unique to Western Europe.

EXOTIC SHELL INLAY

The use of exotic seashells has a long history in the decorative arts. Many have strong visual appeal, are durable and can be cut and polished.

The shell's durability lends itself to veneered surfaces and inlaid accents. The wide variety of types available provides a stimulus to creativity and innovation.

At Maitland-Smith we use a variety of shells in traditional and innovative ways. As a complete veneer covering an entire object, either solid or fashioned into patterns, it is labor-intensive with each piece cut, fitted and hand polished. Our artisans have over 30 years experience working with exotic shells and related skills. As a design leader, Maitland-Smith was the first to offer young penshell as a translucent material for lamp shades and other lighting forms. We developed a method of inlaying translucent young crackled penshell onto molded berglass forms creating a new use for a beautiful natural material.



**8150-17 DRAGON LAMP**

W 17 D 9 H 27

Sherwood Finished Cast Brass Dragon Table Lamp,
Tiger Penshell Shade, Waxstone Base
7W candelabra

**8190-17 FROG PRINCE TABLE LAMP**

W 17 D 12 H 23

Highlighted Verdigris and Antique Patina Brass Frog
Prince Lamp, Penshell Shade
25W candelabra, 2 sockets

**8141-17 PARASOL MONKEY LAMP**

W 17 D 17 H 31

Finely Cast Verdigris Patina Monkey on Books Desk
Lamp, Inlaid Penshell Shade
40W, 2 sockets



8150-17 DRAGON LAMP

**8211-17 KONG TABLE LAMP**

W 13 D 11 H 35

Antique Lined Finished Cast Brass Monkey Table Lamp,
White Agate and Black Waxstone Base, Linen Shade
60W**8179-17 POLO TABLE LAMP**

W 18 D 12 H 31

Bronze Patina Finished Cast Brass Polo Player Table
Lamp, Waxstone Base, Silk Shade
100W**8102-17 TASSEL TABLE LAMP**

W 15 D 9 H 24

Inlaid Faux Tortoise Penshell and Spotted Patina Iron
Decorative Lamp
60W candelabra

8195-17 BUTTERFLY DESK LAMP

W 13 D 11 H 17

Verdigris Finished Desk Lamp, Shell Inlay Butterfly
Decor, Green Tiger Penshell Shade
7W candelabra



8189-17 PEACOCK DESK LAMP

W 22 D 9 H 23

Barcelona Bronze Finished Cast Brass Peacock Desk
Lamp with Various Shell Shade
25W candelabra



8192-17 MARSH TABLE LAMP

W 20 D 12 H 37

Antique Brass and Dark Bronze Highlighted Brass
Cranes Lamp, Young Tiger Penshell Inlay
7W candelabra, 2 sockets





8136-17 MONKEY LAMP, 8122-17 ELEPHANT RIDE TABLE
LAMP, 8135-17 BALLOON LAMP, 8150-13 LOUIS TRUNK

8135-17 BALLOON LAMP

W 14 D 14 H 27

Penshell Crackle Balloon Lamp, Verdigris Bronze Patina
Mounts, Green Marble Base
40W candelabra



8122-17 ELEPHANT RIDE TABLE LAMP

W 18 D 10 H 22

Decorative Elephant Lamp, Tiger Penshell Accents &
Umbrella, Brass Monkey, Wood Carved Base
25W candelabra, 2 sockets



8136-17 MONKEY LAMP

W 16 D 11 H 25

Verdigris Bronze Patina Monkey Lamp, Leather Book
Design Base, Penshell Shade
25W



**8143-17 NEO TABLE LAMP**

W 18 D 18 H 37

Lipshell Inlaid Neoclassic Urn Lamp on Tripod Base,
Cast Antique Patina Brass Mounts, Silk Shade,
Snake- skin Stone Base

100W, 3 way

**8149-17 PERCH TABLE LAMP**

W 17 D 10 H 33

Amber Finished Brass Table Lamp, Birds with Mother of
Pearl Inlay, Silk Shade, Glass Base

100W, 3 way

**8158-17 ORPHEUS TABLE LAMP**

W 18 D 10 H 34

Brass Table Lamp, Blue Hammer Shell Accents,
Silk Shade

100W

Celerie Kemble Collection

8174-17 FLORA LAMP

W 17 D 17 H 26

Soft Brass Table Lamp with Floral Decor, White Oyster
and Yellow Mother of Pearl Inlay, Silk Shade
100W
Celerie Kemble Collection



8299-17 CLASSIQUE TABLE LAMP

W 6 D 6 H 29

Polished Black Waxstone Inlaid Table Lamp with Soft
Brass Accents, Silk Shade
40W, 2 sockets



8193-17 DARTMOUTH TABLE LAMP

W 13 D 13 H 39

Penshell Inlaid Candlestick Lamp, Dark Snakeskin Stone
Base, Brass Mounts, Brown Leather Shade with
Gold Tooling
60W, 3 way





8104-17 ROCK TABLE LAMP

W 18 D 18 H 31

Rock Crystal Inlaid Table Lamp, Amber Finished Brass Accents, Silk Shade, Glass Base

100W, 3 way



8107-17 SPARKLE TORCHERE LAMP

W 9 D 11 H 22

White Oyster Shell Inlaid Torchere Lamp, Brass Accents, Glass Base

40W candelabra





8127-19 ENLIGHTENED SCONCE

W 16 D 7 H 31

Finely Cast Antique Patina Brass Cherub Wall Sconce,
Hand Sewn Silk Shades

25W candelabra, 2 sockets



8119-19 PARASOL SCONCE

W 17 D 19 H 22

Pair of Verdigris Patina Brass Monkey Wall Lamps,
Peshell Parasol Shades

25W, 2 sockets each



8111-19 MONKEY BOOK SCONCE

W 18 D 12 H 14

Antique Brass, Faux Verdigris Finished Brass Wall Lamp,
Deep Chocolate Leather and Peshell

25W candelabra, 2 sockets

8104-19 BUTTERFLY SCONCE

W 16 D 8 H 16

Inlaid Yellow and White Mother of Pearl, Penshell and
Brass Butterfly Wall Lamp
25W, 2 sockets



8100-19 TWISTY SCONCE

W 11 D 7 H 21

Black Finished Iron and Brass Wall Sconce,
Young Penshell Shade
7W candelabra



8105-19 SHELL SCONCE

W 17 D 8 H 13

Black Lip and Tiger Penshell Inlaid Fiberglass Shell Wall
Light with Antique Brass
25W





8106-19 PEACOCK SCONCE

W 9 D 8 H 21

Soft Finished Cast Brass Peacock Wall Sconce with Various Shell Inlay



8118-19 RADIANT CHANDELIER

W 42 D 42 H 43

Verdigris Finished Steel and Patina Brass Chandelier, Peshell Inlay Bowls
100W, 3 sockets



8133-19 ECLIPSE WALL SCONCE

W 21 D 7 H 38

Hammered Matte Black and Antique Gold Leaf Finished Wall Sconce, Tassel Accent
40W candelabra, 2 sockets
Tony Duquette Collection

8133-19 ECLIPSE WALL SCONCE,
8197-16 DUQUE CANDLESTICK





8119-18 SHELL FLOOR LAMP

W 33 D 12 H 46

Soft Finished Brass Floor Lamp with Ebony Bronze Brass
Shade, Leather Accent

40W candelabra

Celerie Kemble Collection



8115-18 EASEL FLOOR LAMP

W 20 D 29 H 81

Soft Brass Finished Floor Lamp and Easel,
Art Work Not Included

25W

Celerie Kemble Collection

8106-18 FORTE FLOOR LAMP

W 25 D 13 H 71

Scrolled Black Iron Floor Lamp with Finely Cast Brass
Mounts, Penshell Shade, Black Waxstone Base, Dimmer
40W



8122-18 LOTUS FLOOR LAMP

W 18 D 18 H 61

Cast Brass with Pompeian Bronze Finish,
Off White Linen Shade
60W, 2 sockets
Tony Duquette Collection





8106-11 PINSTRIPE BOX, 8125-11 TWIG BOX,
8115-11 DOUBLE HEART BOXES,
8132-11 HERRINGBONE BOX

8101-11 HARLEQUIN BOX

W 9 D 7 H 7

Light and Dark Harlequin Penshell Box,
Finely Cast Brass Mounts



8106-11 PINSTRIPE BOX

W 13 D 11 H 9

Multi Colored Shell Inlaid Wooden Box with Antique
Brass Accents



8108-11 BLAKELY BOXES

W 7 D 4 H 7

Set of Two Fossil Clam Stone Inlaid Boxes,
Tiger Penshell and Satina Brass Accents





8110-11 RED EGG BOX

W 7 D 7 H 15

Red Dyed Peshell Inlaid Egg Shaped Box on Golden Brass Stand



8163-11 CELEBRATION BOX

W 7 D 7 H 22

Highlighted Brass Ladies Holding Tiger Peshell Box, Marble Base

8143-11 MAZE BOX

W 12 D 9 H 5

Black Penshell Box with Polished Brass Accents



8135-11 COSTELLO BOX

W 10 D 10 H 4

Crystal Stone and Green Waxstone Inlaid Costello Box
Hable Collection



8119-11 STONELY BOX

W 13 D 11 H 4

White Fossil Stone and Tiger Penshell Inlaid Box with
Polished Brass Accents





8132-11 HERRINGBONE BOX

W 10 D 4 H 3

Light Clam Stone Inlaid Box with Chevron Pattern



8125-11 TWIG BOX

W 11 D 9 H 10

White Hammer Shell Inlaid Box with Classic Finished
Cast Brass Bird Accents



8115-11 DOUBLE HEART BOXES

W 6 D 5 H 4

Set of Two White Hammer Shell and Brown Lip Shell
Inlaid Boxes with Brass Accents

8161-11 LADYBUG BOX

W 7 D 5 H 3

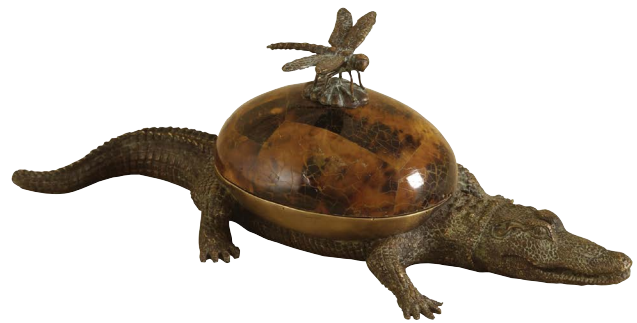
Red and Black Penshell Inlaid Box with Ladybug Motif,
Polished Brass Accents



8165-11 DRAGONFLY BOX

W 14 D 6 H 5

Cast Brass Verdigris Finished Box, Crocodile Motif,
Crackled Tiger Penshell Accents



8164-11 KNEELING ELEPHANT BOX

W 13 D 7 H 9

Cast Brass Elephant Box, Dark Bronze,
Verdigris Finish, Black and Tiger Penshell Inlay



**8177-11 ROI SOLEIL JEWEL BOX**

W 12 D 9 H 6

Lapis Lazuli Inlaid Jeweled Box, Cast Sherwood Brass,
Rock Crystals and Stone Crystals

Tony Duquette Collection

**8178-11 ALASTAYA JEWEL BOX**

W 9 D 7 H 3

Cast Polished Brass Alastaya Jeweled Box with Inlaid
Dyed Green Penshell, Rock Crystals

Tony Duquette Collection

**8189-12 MAGIC FOREST BOX**

W 9 D 7 H 11

Dusty Nickel Finished Brass Deer on Inlaid Pawa and
Oyster Shell Box, Faux Coral Accents

Tony Duquette Collection



8177-11 ROI SOLEIL JEWEL BOX, 8178-11 ALASTAYA
JEWEL BOX, 8189-12 MAGIC FOREST BOX



8102-25 TRAPEZOID TRAY

8112-25 KOI POND TRAY

W 11 D 11 H 6

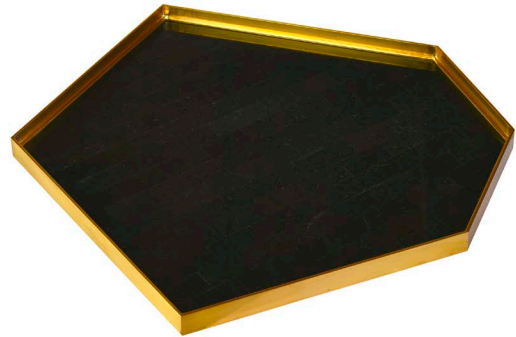
Polished Cast Brass Tray with Paua Shell and Dyed
Green Penshell Inlay with a Fish Motif



8102-25 TRAPEZOID TRAY

W 20 D 20 H 1

Asymmetrical Green Waxstone Inlaid Tray with Soft
Brass Accents
Hable Collection



8109-25 GALLERY TRAY

W 23 D 14 H 4

Natural Finished Walnut Veneered Tray in Marquetry
Motif with Classic Brass Accents





8130-25 OCTAGON TRAY

W 20.25 D 20.25 H 1.25

Cast Resin Tray with New York Slate Finished Stone Inlay, Dragon Decor



8128-25 TRES TRAY CHIC

W 28 D 18 H 2

Hand Painted Black and White Finished Faux Malachite Tray with Silver Antique Finish on Brass Handles Tony Duquette Collection



8108-12 FISHY COASTERS

W 6 D 6 H 5

Set of Eight Multi Shell Inlay Coasters in a Soft Brass Fish Motif Holder





8128-21 CONSTANCE BOWL

W 26 D 16 H 7

Crushed White Agate Cast Bowl
Celerie Kemble Collection



8124-21 REVEAL BOWL

W 16 D 16 H 6

Rock Crystal Bowl with Amber Brass Base



8111-21 ALBERT BOWL WITH STAND

W 13 D 13 H 12

White Mother of Pearl Inlaid Bowl with Decorative
Classic Finished Brass Stand

8169-21 MACTAU LIDDED BOWL

W 16 D 9 H 18

Barcelona Bronze Finished Cast Brass Elephant with
Lidded Faux Ostrich Egg Bowl and Faux Coral Accent
Tony Duquette Collection



8135-21 BARKER BOWL

W 15 D 15 H 7

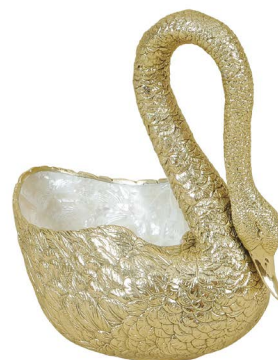
Faux Black Croc Leather and Tiger Penshell Inlaid Bowl,
Cast Brass Dog Motif



8104-21 SWAN BOWL

W 9 D 5 H 10

Polished Finished Cast Brass Swan
with Troca Shell Inlay





8148-12 LION SOAP DISH

W 20 D 6 H 7

Classic Finished Cast Brass Lion Soap Dish
with Hammer Blue Shell Accents



8181-12 ALLIGATOR SOAP DISH

W 5 D 7 H 11

Verdigris Finished Cast Brass Crocodile Soap Holder,
Aged Regency Base

8145-12 PRIDE DISH

W 11 D 5 H 8

Soft Finished Cast Brass Peacock Dish
with Paua Shell Inlaid Accents



8149-12 LEAF DISH

W 13 D 11 H 2

Soft Finished Cast Brass Leaf Dish with Snail Motif,
Abalone Shell Accents





8141-12 PURSUIT BOOKENDS

W 10 D 7 H 11

Pair of Bookends with Cat and Bird Motif, Mother of Pearl Shell Accents, Gold Agate Base



8112-13 TORTOISE MAGAZINE RACK

W 21 D 11 H 14

Clear Acrylic Magazine Rack, Turtle Motif, Polished Brass Accents



8114-12 BRAVE MONKEY TISSUE HOLDER

W 15 D 14 H 31

Faux Verdigris and Bronze Finished Whimsical Monkey Tissue Holder, Verdigris Base

8111-12 FROG TISSUE HOLDER

W 7 D 7 H 11

Deep Chocolate Leather Inlay and Cast Brass Verdigris
Frog Tissue Holder



8175-12 JESTERS PAPER TOWEL HOLDER

W 26 D 10 H 18

Antique Brass and Chocolate Leather Finished Jester
Monkey Paper Towel Holder



8143-12 TWISTED CROCODILE WINE HOLDER

W 16 D 8 H 9

Light Finished Cast Brass Crocodile Wine Holder





8109-12 TURTLE WINE HOLDER

W 6 D 9 H 8

Polished Finished Brass Wine Holder with Tiger Pen shell Inlay, Turtle Motif



8125-12 SERVER MONKEY WINE HOLDER

W 12 D 13 H 23

Dark Bronze and Verdigris Finished Brass Monkey Wine Holder, Black Waxstone Base



8146-13 BAMBOO WINE HOLDER

W 14 D 14 H 37

Polished Nickel and Satina Finished Brass Wine Holder in Bamboo Decor, Stainless Liner
Tony Duquette Collection

8196-16 SHIKKI CANDLESTICK

W 6 D 6 H 19

Aged Black Lacquer Shikki Candlestick, Hand Painted
Gold Accents, Ostrich Egg Motif
Tony Duquette Collection



8197-16 DUQUE CANDLESTICK

W 8 D 8 H 12

Satina Gold Gilt Aluminum and Steel Duque Candlestick
with Rock Crystal Beading
Tony Duquette Collection



8166-16 ROCOCO CANDELABRA

W 10 D 10 H 29

Sherwood Brass Urn Candelabra with
Gold Agate Stone Inlaid Base





8199-16 CORALINO CANDLESTICK, 8169-21 MACTAU BOWL,
8169-30 CETE TABLE

8199-16 CORALINO CANDLESTICK

W 5 D 5 H 11

Coral Enamel and Antique Brass Finished Candlestick
with Natural Pearl Accents
Tony Duquette Collection



8162-16 CAPO CANDLEHOLDER

W 13 D 11 H 41

Old Gold Finished Cast Resin Candleholder
with Barcelona Brass Accents



8168-16 TORCH CANDLEHOLDER

W 11 D 11 H 34

Decorative Cut Glass Globe Candleholder,
Ebonized Stand, Antique Brass Accents





8198-16 VOTIVE SUN CANDLEHOLDER

W 22 D 5 H 25

Gold Leaf Metal Votive Candleholder
on White Marble Base

Tony Duquette Collection



8126-13 FROG PRINCE CLOCK

W 6 D 6 H 5

Polished Finished Cast Brass Clock, Frog Motif, Dyed
Red Panshell Inlaid Accents



8139-13 AGILE ELEPHANT CLOCK

W 5 D 4 H 9

Verdigris Finished Cast Brass Elephant Table Top Clock,
Panshell Inlay, Stone Base

8190-12 ALASTAYA JEWELED PHOTO FRAME

W 9 D 1 H 12

Cast Polished Brass Alastaya Jeweled Photo Frame with Dyed Green Penshell, Rock Crystals, Frame will Hold a 5x7 Picture
Tony Duquette Collection



8111-13 LUCILLE EASEL

W 24 D 28 H 67

Hand Carved Mahogany Easel
Supports up to 40lbs



8127-13 PARFAIT UMBRELLA STAND

W 12 D 12 H 33

Brass Umbrella Stand with Rattan Accent, Bamboo Motif
Umbrellas not included
Celerie Kemble Collection





8110-21 DECADENT LIDDED VASE

W 9 D 9 H 22

White Hammer Shell Inlaid Lidded Vase, Floral Brass
Decor with Shell Accents on Glass Base



8101-21 GRACIE VASE

W 15 D 10 H 23

Black Marble Vase, Finely Cast Light Antique Patina
Brass Mounts



8126-21 CORMORANT URN

W 13 D 13 H 27

Crushed Black Waxstone Cast Urn with Cormorant
Handles

8110-21 DECADENT LIDDED VASE, 8160-10 CARL
EGG ON STAND, 8102-10 PENNY PENGUIN, 8145-12
PRIDE DISH, 8163-12 ROWING FROG, 8104-21 SWAN
BOWL, 8161-11 LADYBUG BOX, 8199-10 YOUNG
TURTLE ACCESSORY, 8126-13 FROG PRINCE CLOCK,
8225-10 CHIRP PAPERWEIGHT





8150-13 LOUIS TRUNK

W 44 D 25 H 25

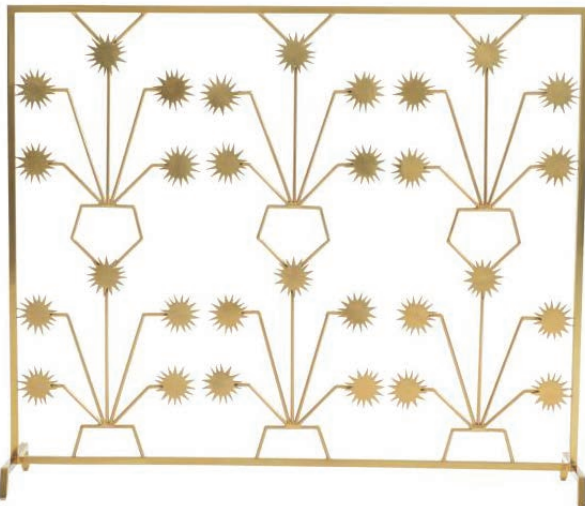
Aged Regency Finished Louis Trunk, Florentine Leather Finish on Leather with Maitland-Smith Logo, Antique Brass Accents



8149-13 LION FIREPLACE FENDER

W 55 D 5 H 8

Soft Finished Brass Lion Fireplace Fender with Green Waxstone Base



8120-13 SPARK FIREPLACE SCREEN

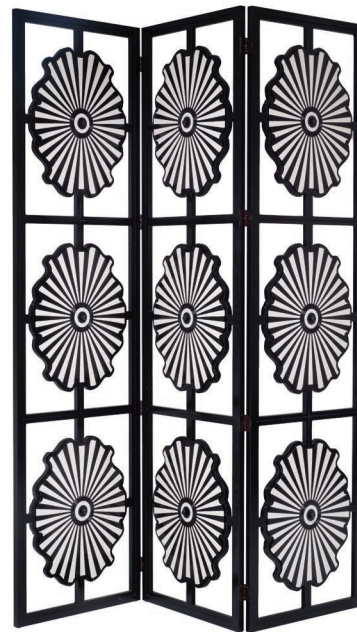
W 38 D 8 H 32

Soft Finished Brass Fireplace Screen
Hable Collection

8116-13 MAJESTIC FIREPLACE SCREEN
 W 54 D 12 H 36
 Scrolled Textured Verdigris Iron Fire Screen,
 Brass Accents, Stone Base



8107-27 SUNBURST FLOOR SCREEN
 W 72 D 3 H 90
 Black and White Dove Lacquer Three Panel Sunburst
 Floor Screen, Same Design on Both Sides
 Tony Duquette Collection



8106-27 SERENISIMA FLOOR SCREEN
 W 80 D 2 H 90
 Hand Painted Four Panel Canvas Serenisima Floor
 Screen, Gondola in Venice Decor, Back of Screen: Subtle
 Greek Key Design Around Perimeter of Each Panel
 Tony Duquette Collection





8106-10 PINNACLE OBELISKS

W 8 D 8 H 33

Set of Two Clam Stone Inlaid Obelisks
with Brass Accents

Celerie Kemble Collection



8283-10 IMPERIAL NARWHAL TUSK

W 10 D 10 H 94

Cast Resin Imperial Narwhal Tusk on Black Waxstone
with Brass and Rock Crystal Accents

Tony Duquette Collection



8107-10 SPLENDID TUSKS

W 14 D 14 H 68

Pair of Clam Stone Inlaid Tusks with Brass Accents on
Violet Oyster Shell Base

Celerie Kemble Collection

8124-10 BLACK EGG SCULPTURE

W 12 D 7 H 7

Gemma Black Waxstone Inlaid Decorative Accessory
Hable Collection



8118-10 EGG STONE SCULPTURE

W 11 D 10 H 24

Honed White Agate Inlaid Sculpture
on a Walnut Veneered Base
Hable Collection



8115-10 OVAL STONE SCULPTURE

W 12 D 6 H 17

Black Waxstone Inlaid Decorative Sculpture
with Satina Brass Base
Hable Collection





8160-10 CARL EGG ON STAND

W 7 D 7 H 11

Decorative White Oyster Shell Inlaid Egg with Faux Black Pearls, Cast Brass Stand



8137-10 MOBIUS SCULPTURE

W 11 D 7 H 15

Dark Bronze Finished Cast Resin Abstract Sculpture on Black Waxstone Inlaid Base



8135-12 REMY SCULPTURE

W 11 D 8 H 6

Dark Bronze Finished Cast Brass Eagle with Shell Motif Dish

8102-10 PENNY PENGUIN

W 4 D 5 H 10

Polished Cast Brass Penguin with Black Penshell and
Mother of Pearl Inlay



8231-10 BIRD BRANCH SCULPTURE

W 15 D 6 H 22

Ebony Bronze and Amber Finished Cast Brass Bird
on Branch



8225-10 CHIRP PAPERWEIGHT

W 4 D 3 H 3

Cast Brass Antique Finished Bird Paperweight,
Black Waxstone Base





8201-10 GAME BIRD SCULPTURES

W 15 D 18 H 16

Set of Two Verdigris Brass Patina Birds with
Tiger Penshell Accents



8167-10 PROUDEST PEACOCK SCULPTURE

W 19 D 19 H 21

Cast Brass Peacock with Assorted Shell Inlay, Black
Waxstone Base
Celerie Kemble Collection



8169-10 MANTLING BIRD SCULPTURE

W 9 D 8 H 9

Soft Cast Brass Egret with Multi Colored Inlaid Shell

8158-10 GOLDEN GOOSE ACCESSORY

W 11 D 5 H 10

Antique Bronze Finished Cast Brass Goose with Egg,
Black Waxstone Base



8152-10 EGRET SCULPTURE

W 11 D 6 H 26

Decorative Polished White Finished Brass Ostrich,
Black Waxstone Base



8139-10 ROCKY TURTLE ACCESSORY

W 9 D 11 H 8

Cast Brass Turtle, Antique Aluminum Finish,
Rock Crystal Accents





8291-40 TRIGGER FISH DECORATIVE ACCESSORY
8130-33 CLOSS COCKTAIL TABLE

8114-10 ALLY ALLIGATOR

W 34 D 9 H 27

Decorative Stone Cast Alligator Accessory,
Not for Outdoor Use



8291-40 TRIGGER FISH DECORATIVE ACCESSORY

W 20 D 5 H 12

Cast Resin Trigger Fish with Crystal Stone Inlay and
Brass Accents



8165-10 VICTORIA SCULPTURE

W 16 D 11 H 12

Brulee Finished Cast Brass Lady Walking Alligator,
Abalone Shell Accents





8285-10 SNAILBAIT, 8122-18 LOTUS FLOOR LAMP,
8107-27 SUNBURST FLOOR SCREEN

8199-10 YOUNG TURTLE ACCESSORY

W 8 D 5 H 2

Young Penshell and Brass Turtle



8285-10 SNAILBAIT

W 37 D 15 H 18

Cast Brass Decorative Snail in Antique Brass Finish

Tony Duquette Collection



8116-10 ARTISTIC ELEPHANT

W 8 D 5 H 8

Black Waxstone Inlaid Elephant Sculpture

Hable Collection





8234-10 KING FROG ACCESSORY

W 6 D 8 H 11

Antique Finished Cast Brass Frog Reading Book



8209-10 FROG BAND

W 10 D 8 H 12

Set of Four Antique Brass Frog Band with Verdigris and Bronze Highlights



8163-12 ROWING FROG

W 9 D 3 H 3

Classic and Antique Finished Cast Brass Frog Rowing Boat, Blue Hammer Shell Accents

8192-10 HISTORIC HORSE

W 11 D 5 H 11

Pompeian Bronze Finished Cast Brass Replica of
Antique Chinese Horse on Waxstone Base



8172-10 ARIES RAM HEAD

W 9 D 12 H 20

Cast Brass Rams Head with Acrylic Horns on Brass Stand
Celerie Kemble Collection



8180-10 MOTHER'S PRIDE GIRAFFES

W 15 D 4 H 14

Set of Two Polished Finished Cast Brass Giraffes with
Tiger Penshell Inlaid Accents





8288-10 SUSIE DECORATIVE BULL ACCESSORY

W 12 D 7 H 8

Cast Brass Susie Bull Accessory in Old Brass Finish
Hable Collection



8229-10 LEAPING TIGER

W 12 D 5 H 11

Antiqued Finished Cast Brass Tiger on Black Penshell
Base



8223-10 NEARSIDE POLO PLAYER

W 22 D 10 H 23

Finely Cast Dual Tone Bronze Patina Brass Polo Player
on Horse, Self Base

8173-10 GRIFFIN SCULPTURE

W 5 D 9 H 14

Brulee Finished Cast Brass Griffin with Red Penshell
Inlay, Snakeskin Stone Base



8222-10 DANCERS SCULPTURE

W 9 D 9 H 11

Finely Cast Verdigris Patina Brass Dancing
Female Figures, Black Marble Base



8210-10 CUPID SCULPTURE

W 22 D 24 H 42

Dark Bronze and Verdigris Patina Brass Cupid and
Female Figure, Black Marble Base





8149-10 DIVER SCULPTURE

W 18 D 5 H 9

Ebony Bronze Finished Cast Brass Diver, Glass Base,
Black Waxstone Accents



8105-23 COLLONA PEDESTAL

W 15 D 15 H 48

Collona Pedestal in Painted Faux Malachite with a Black
Lacquer Base and Brass Accents
Tony Duquette Collection



8104-23 PHINTHLY PEDESTAL

W 12 D 12 H 50

Phinthly Pedestal with Zebrano Veneer in a Toffee Finish
Tony Duquette Collection

8101-23 LION PEDESTAL

W 20 D 20 H 49

Egyptian Brown Finished Carved Mahogany Georgian
Torchere, Snakeskin Stone Top



8105-13 EAGLE WORLD GLOBE

W 30 D 30 H 52

Aged Regency Mahogany and Pewter Finished
Aluminum Floor Standing Globe, Brass Accents





8145-14 TERRAPIN WALL DECOR

W 25 D 10 H 32

White Clam Stone Inlaid Wall Decor with Brass Accents
Celerie Kemble Collection



8155-14 FLORENTINE WALL BRACKET

W 14 D 8 H 15

Iron and Antique Brown Leather Wall Bracket,
Brass Accents

8112-28 GALLANT MIRROR

W 48 D 4 H 63

Cracked Black Penshell Inlaid Mirror with Satina
Finished Brass Accents
Celerie Kemble Collection



8157-28 MILAN MIRROR

W 47 D 3 H 71

Overscaled Empire Mirror in Soft Black and Burnished
Antiqued Gold, Beveled Mirror
LaBarge Collection

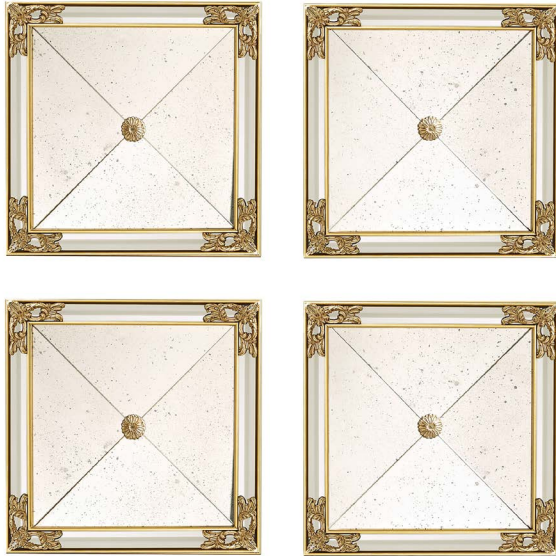


8158-28 VECCIO MIRROR

W 41 D 2 H 51

Rectangular Mirror Accented by Gold Floral Decor,
Mirrored Borders, Beveled Mirror
LaBarge Collection





8160-28 NOVELLA SET OF FOUR MIRRORS

W 16 D 3 H 16

Set of Four Contemporary Square Mirrors in Gold Metal Leaf, Mirrored Side Panels

LaBarge Collection

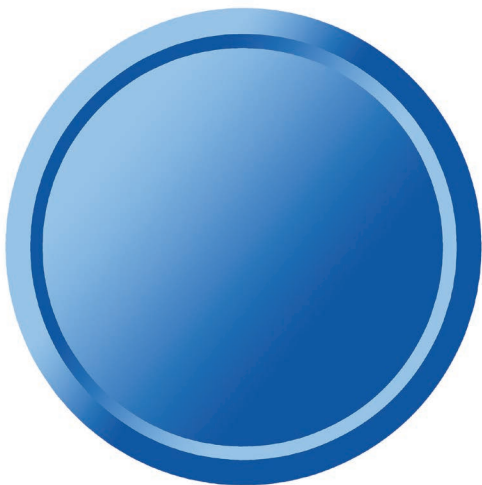


8194-28 CONCERTO MIRROR

W 34 D 2 H 34

Assorted Shell Inlaid Round Mirror with White Gold Accents

LaBarge Collection



8250-28 AZURE MIRROR

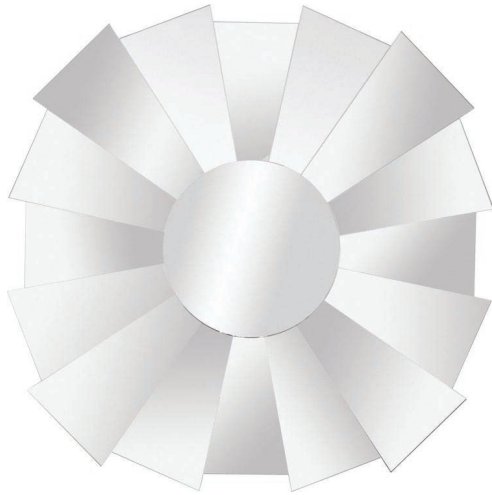
W 40 D 2 H 40

Round Blue Tinted Mirror on Mirror with Silver Leaf Edge

Hable Collection



8160-28 NOVELLA SET OF FOUR MIRRORS,
8135-51 CHINOISERIE CHIFFONIER



8208-28 ACTION MIRROR

W 36 D 1 H 36

Sunburst Motif Mirror with Staggered Mirror Panels
LaBarge Collection



8213-28 SUNBURST MIRROR

W 40 D 2 H 40

Round Gilded Mirror with Sherwood Finished Brass
Decor
LaBarge Collection



8292-28 QUATREFOIL MIRROR

W 30 D 1 H 30

Quatrefoil Motif Mirror with White Waxstone Inlay,
Antique Gold Accents
LaBarge Collection

8227-28 TRACK MIRROR

W 28 D 1 H 49

Soft Finished Brass Frame with Beveled Mirror Glass
Hable Collection



8100-21 CIPRIANI MIRROR

W 33 D 2 H 57

Baroque Mirror with Mirrored Borders Finished in
Antique Gold Metal Leaf
LaBarge Collection



8108-28 PEDIMENT MIRROR

W 40 D 2 H 55

Eglomise Faux Tortoise Mirror with Gold Gilded Accents
Celerie Kemble Collection



8276-28 BIOMORPHIC MIRROR, 8167-34
BIOMORPHIC CONSOLE, 8199-16 CORALINO
CANDLESTICK, 8169-21 MACTAU BOWL,
8198-16 VOTIVE SUN, 8133-19 THE ECLIPSE
SCONCE



8276-28 BIOMORPHIC MIRROR

W 48 D 5 H 62

Cast Resin Gold Leaf Biomorphic Mirror

Note: Mirror may be hung horizontal or vertical

Tony Duquette Collection



8156-15 CARTOUCHE MIRROR

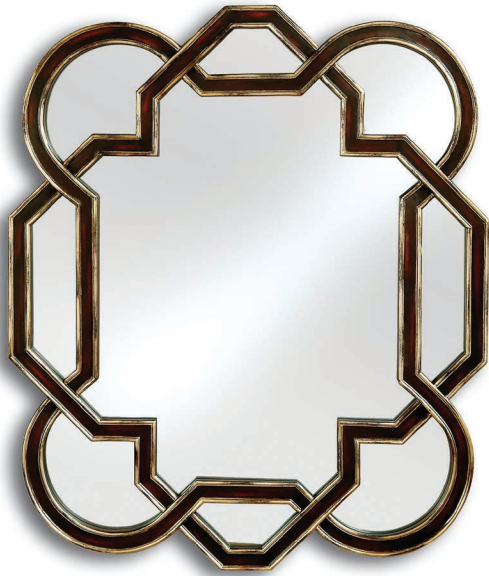
W 26 D 2 H 46

Elegant Mirror in Antiqued Gold Metal Leaf Finish,

C-Scroll Motif

LaBarge Collection





8161-28 GEOMETRO MIRROR

W 43 D 2 H 51

Contemporary Mirror with Geometric Shape, Aubergine Finish with Silver Accents

La Barge Collection



8155-28 BRUN MIRROR

W 32 D 2 H 48

Traditional 18th-Century Mirror with C-scroll Design. Antique Silver and Soft Black

La Barge Collection



8129-28 TRAVERSI MIRROR

W 47 D 2 H 38

Baroque Hand Carved Overmantel Mirror In Antiqued Gold Metal Leaf Finish

LaBarge Collection

8161-28 GEOMETRO MIRROR, 8106-10 OBELISKS,
8130-25 OCTAGON TRAY



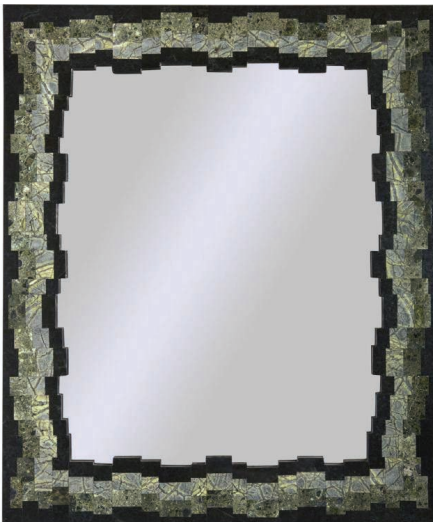


8172-28 GANDOLFI MIRROR

W 39 D 2 H 55

Hand Carved Wooden Mirror with Burnished Gold Finish

La Barge Collection

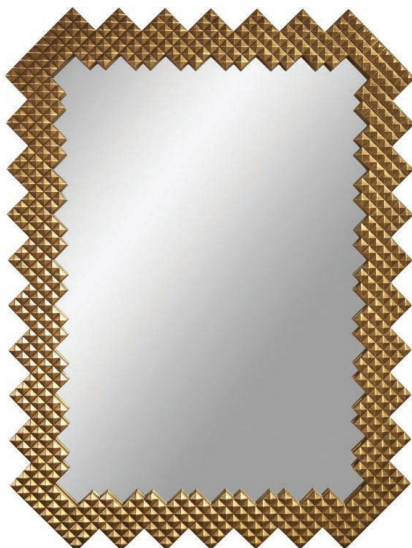


8204-28 BREAKOUT MIRROR

W 30 D 2 H 36

Assorted Stone Inlaid Mirror

Hable Collection



8205-28 PYRAMIDAL MIRROR

W 40 D 2 H 30

Textured Gold Gilt Cast Resin Mirror

Hable Collection

8163-28 SANTA CROCE MIRROR

W 28 D 1 H 55

Wheel Engraved and Cut Venetian Mirror with Beveled
Mirror Glass
La Barge Collection



8167-28 SAN MARCO MIRROR

W 21 D 2 H 40

Hand Cut and Etched Oval Venetian Glass Mirror Frame,
Beveled Mirror Glass
La Barge Collection



8166-28 SAN POLO MIRROR

W 28 D 2 H 55

Hand Cut and Etched Shaped Venetian Glass Mirror
Frame, Beveled Mirror
La Barge Collection



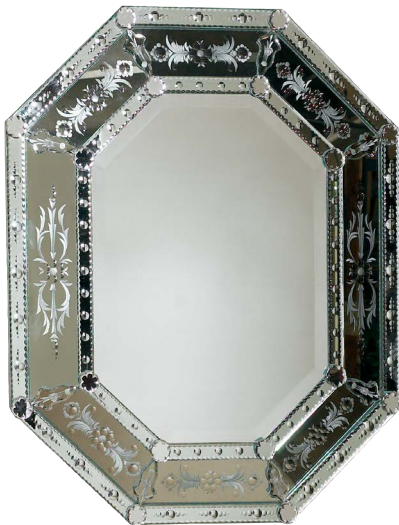


8159-28 FERRETTI MIRROR

W 49 D 2 H 87

Hand Carved Overscaled Baroque Mirror In Antique Gold with Red Umber Highlights

La Barge Collection



8165-28 TORCELLO MIRROR

W 30 D 3 H 38

Hand Cut and Etched Shaped Venetian Glass Mirror Frame. Beveled Mirror

La Barge Collection



8164-28 CASTELLO MIRROR

W 31 D 2 H 50

Hand Cut and Etched Shaped Venetian Glass Mirror Frame. Beveled Mirror

La Barge Collection

8171-28 CANOVA MIRROR

W 38 D 4 H 61

Empire Mirror with Burnished Gold and Black.

Beveled Glass

LaBarge Collection



8170-28 BONITA MIRROR

W 32 D 2 H 82

Overscaled Mirror with Gilded Antique Silver Finish,

Eglomise Antique Mirror

La Barge Collection



8174-28 CASALI MIRROR

W 68 D 2 H 55

Carved Acanthus Leaf Gold Gilded Mirror with

Sectioned Mirror Glass

La Barge Collection





8203-28 STONELY MIRROR

W 22 D 2 H 53

White Agate Stone Inlaid Mirror,

May be hung either direction

Hable Collection



8212-28 PARTHENON MIRROR

W 31 D 3 H 47

Mirror Glass Inlaid Mirror with Beveled Edges,

Chablis Silver Accents

LaBarge Collection

8102-28 SAFARI FLOOR MIRROR

W 43 D 2 H 81

Ebony Finished and Zebra Leather Inlay Mirror, Beveled
Glass

LaBarge Collection



8300-28 NEOCLASSIQUE CHEVAL MIRROR

W 36 D 20 H 81

Black Lacquer Finished Cheval Mirror with Vintage Silver
Gilt and Brass Accents, Beveled Glass

LaBarge Collection



NUMERICAL LISTING

| Style # | Style Name | Page | Style # | Style Name | Page |
|---------|----------------------------------|--------|---------|------------------------------------|------------|
| 8100-19 | Twisty Sconce..... | 16 | 8118-10 | Egg Stone Sculpture | 50 |
| 8100-21 | Cipriani Mirror..... | 70 | 8118-19 | Radiant Chandelier..... | 17 |
| 8101-11 | Harlequin Box | 22 | 8119-11 | Stonely Box..... | 24 |
| 8101-21 | Gracie Vase | 45 | 8119-18 | Shell Floor Lamp..... | 19 |
| 8101-23 | Lion Pedestal..... | 64 | 8119-19 | Parasol Sconce..... | 15 |
| 8102-10 | Penny Penguin | 46, 52 | 8120-13 | Spark Fireplace Screen | 47 |
| 8102-17 | Tassel Table Lamp | 7 | 8122-17 | Elephant Ride Table Lamp | 9, 10 |
| 8102-25 | Trapezoid Tray..... | 29, 30 | 8122-18 | Lotus Floor Lamp..... | 20, 57 |
| 8102-28 | Safari Floor Mirror | 80 | 8124-10 | Black Egg Sculpture | 50 |
| 8104-17 | Rock Table Lamp | 13, 14 | 8124-21 | Reveal Bowl | 33 |
| 8104-19 | Butterfly Sconce | 16 | 8125-11 | Twig Box | 21, 25 |
| 8104-21 | Swan Bowl | 34, 46 | 8125-12 | Server Monkey Wine Holder | 39 |
| 8104-23 | Phinthly Pedestal | 63 | 8126-13 | Frog Prince Clock | 43, 46 |
| 8105-13 | Eagle World Globe..... | 64 | 8126-21 | Cormorant Urn..... | 45 |
| 8105-19 | Shell Sconce..... | 16 | 8127-13 | Parfait Umbrella Stand..... | 44 |
| 8105-23 | Collona Pedestal | 63 | 8127-19 | Enlightened Sconce | 15 |
| 8106-10 | Pinnacle Obelisks | 49, 74 | 8128-21 | Constance Bowl..... | 33 |
| 8106-11 | Pinstripe Box..... | 21, 22 | 8128-25 | Tres Tray Chic..... | 31 |
| 8106-18 | Forte Floor Lamp..... | 20 | 8129-28 | Traversi Mirror..... | 73 |
| 8106-19 | Peacock Sconce..... | 17 | 8130-25 | Octagon Tray | 31, 32, 74 |
| 8106-27 | Serenisima Floor Screen..... | 48 | 8130-33 | Closs Cocktail Table..... | 55 |
| 8107-10 | Splendid Tusk..... | 49 | 8132-11 | Herringbone Box..... | 21, 25 |
| 8107-17 | Sparkle Torchere Lamp..... | 13 | 8133-19 | Eclipse Wall Sconce..... | 17, 18, 71 |
| 8107-27 | Sunburst Floor Screen | 48, 57 | 8135-11 | Costello Box..... | 24 |
| 8108-11 | Blakely Boxes | 22 | 8135-12 | Remy Sculpture..... | 51 |
| 8108-12 | Fishy Coasters..... | 31 | 8135-17 | Balloon Lamp | 9, 10 |
| 8108-28 | Pediment Mirror..... | 70 | 8135-21 | Barker Bowl | 34 |
| 8109-12 | Turtle Wine Holder..... | 39 | 8135-51 | Chinoiserie Chiffonier..... | 68 |
| 8109-25 | Gallery Tray..... | 30 | 8136-17 | Monkey Lamp | 9, 10 |
| 8110-11 | Red Egg Box..... | 23 | 8137-10 | Mobius Sculpture | 51 |
| 8110-21 | Decadent Lidded Vase | 45, 46 | 8139-10 | Rocky Turtle Accessory..... | 54 |
| 8111-12 | Frog Tissue Holder..... | 38 | 8139-13 | Agile Elephant Clock..... | 43 |
| 8111-13 | Lucille Easel..... | 44 | 8141-12 | Pursuit Bookends..... | 37 |
| 8111-19 | Monkey Book Sconce..... | 15 | 8141-17 | Parasol Monkey Lamp..... | 5 |
| 8111-21 | Albert Bowl with Stand | 33 | 8143-11 | Maze Box | 24 |
| 8112-13 | Tortoise Magazine Rack..... | 37 | 8143-12 | Twisted Crocodile Wine Holder..... | 38 |
| 8112-25 | Koi Pond Tray | 30 | 8143-17 | Neo Table Lamp | 11 |
| 8112-28 | Gallant Mirror..... | 66 | 8145-12 | Pride Dish | 36, 46 |
| 8114-10 | Ally Alligator..... | 56 | 8145-14 | Terrapin Wall Decor..... | 65 |
| 8114-12 | Brave Monkey Tissue Holder | 37 | 8146-13 | Bamboo Wine Holder | 39 |
| 8115-10 | Oval Stone Sculpture | 50 | 8148-12 | Lion Soap Dish..... | 35 |
| 8115-11 | Double Heart Boxes..... | 21, 25 | 8149-10 | Diver Sculpture | 63 |
| 8115-18 | Easel Floor Lamp | 19 | 8149-12 | Leaf Dish | 36 |
| 8116-10 | Artistic Elephant..... | 58 | 8149-13 | Lion Fireplace Fender | 47 |
| 8116-13 | Majestic Fireplace Screen | 48 | 8149-17 | Perch Table Lamp | 11 |

NUMERICAL LISTING

| Style # | Style Name | Page | Style # | Style Name | Page |
|---------|----------------------------------|------------|---------|--|------------|
| 8150-13 | Louis Trunk | 9, 47 | 8180-10 | Mother's Pride Giraffes..... | 60 |
| 8150-17 | Dragon Lamp | 5, 6 | 8181-12 | Alligator Soap Dish | 35 |
| 8152-10 | Egret Sculpture | 54 | 8189-12 | Magic Forest Box..... | 27, 28 |
| 8155-14 | Florentine Wall Bracket..... | 65 | 8189-17 | Peacock Desk Lamp | 8 |
| 8155-28 | Brun Mirror | 73 | 8190-12 | Alastaya Jeweled Photo Frame..... | 44 |
| 8156-15 | Cartouche Mirror | 72 | 8190-17 | Frog Prince Table Lamp..... | 5 |
| 8157-28 | Milan Mirror..... | 66 | 8192-10 | Historic Horse | 60 |
| 8158-10 | Golden Goose Accessory..... | 54 | 8192-17 | Marsh Table Lamp | 8 |
| 8158-17 | Orpheus Table Lamp | 11 | 8193-17 | Dartmouth Table Lamp..... | 12 |
| 8158-28 | Veccio Mirror..... | 66 | 8194-28 | Concerto Mirror..... | 67 |
| 8159-28 | Ferretti Mirror | 77 | 8195-17 | Butterfly Desk Lamp..... | 8 |
| 8160-10 | Carl Egg on Stand | 46, 51 | 8196-16 | Shikki Candlestick | 40 |
| 8160-28 | Novella Set of 4 Mirrors | 67, 68 | 8197-16 | Duque Candlestick..... | 18, 40 |
| 8161-11 | Ladybug Box..... | 26, 46 | 8198-16 | Votive Sun Candleholder..... | 43, 71 |
| 8161-28 | Geometro Mirror | 73, 74 | 8199-10 | Young Turtle Accessory | 46, 58 |
| 8162-16 | Capo Candleholder | 42 | 8199-16 | Coralino Candlestick..... | 41, 42, 71 |
| 8163-11 | Celebration Box..... | 23 | 8201-10 | Game Bird Sculptures | 53 |
| 8163-12 | Rowing Frog..... | 46, 59 | 8203-28 | Stonely Mirror | 79 |
| 8163-28 | Santa Croce Mirror | 76 | 8204-28 | Breakout Mirror..... | 75 |
| 8164-11 | Kneeling Elephant Box | 26 | 8205-28 | Pyramidal Mirror | 75 |
| 8164-28 | Castello Mirror | 77 | 8208-28 | Action Mirror..... | 69 |
| 8165-10 | Victoria Sculpture | 56 | 8209-10 | Frog Band..... | 59 |
| 8165-11 | Dragonfly Box | 26 | 8210-10 | Cupid Sculpture..... | 62 |
| 8165-28 | Torcello Mirror | 77 | 8211-17 | Kong Table Lamp..... | 7 |
| 8166-16 | Rococo Candelabra..... | 40 | 8212-28 | Parthenon Mirror | 79 |
| 8166-28 | San Polo Mirror | 76 | 8213-28 | Sunburst Mirror..... | 69 |
| 8167-10 | Proudest Peacock Sculpture | 53 | 8222-10 | Dancer's Sculpture | 62 |
| 8167-28 | San Marco Mirror | 76 | 8223-10 | Nearside Polo Player | 61 |
| 8167-34 | Biomorphic Console | 71 | 8225-10 | Chirp Paperweight | 46, 52 |
| 8168-16 | Torch Candleholder | 42 | 8227-28 | Track Mirror | 70 |
| 8169-10 | Mantling Bird Sculpture | 53 | 8229-10 | Leaping Tiger..... | 61 |
| 8169-21 | Mactau Lidded Bowl | 34, 41, 71 | 8231-10 | Bird Branch Sculpture | 52 |
| 8169-30 | Cete Table | 41 | 8234-10 | King Frog Accessory | 59 |
| 8170-28 | Bonita Mirror..... | 78 | 8250-28 | Azure Mirror | 67 |
| 8171-28 | Canova Mirror | 78 | 8276-28 | Biomorphic Mirror | 71, 72 |
| 8172-10 | Aries Ram Head | 60 | 8283-10 | Imperial Narwhal Tusk..... | 49 |
| 8172-28 | Gandolfi Mirror | 75 | 8285-10 | Snailbait | 57, 58 |
| 8173-10 | Griffen Sculpture | 62 | 8288-10 | Susie Decorative Bull Accessory..... | 61 |
| 8174-17 | Flora Lamp | 12 | 8291-40 | Trigger Fish Decorative Accessory..... | 55, 56 |
| 8174-28 | Casali Mirror..... | 78 | 8292-28 | Quatrefoil Mirror..... | 69 |
| 8175-12 | Jesters Paper Towel Holder | 38 | 8299-10 | Leaping Tiger..... | 61 |
| 8177-11 | Roi Soleil Jeweled Box..... | 27, 28 | 8299-17 | Classique Table Lamp..... | 12 |
| 8178-11 | Alastaya Jeweled Box | 27, 28 | 8300-28 | NeoClassique Cheval Mirror..... | 80 |
| 8179-17 | Polo Table Lamp | 7 | | | |

ALPHABETICAL LISTING

| Style Name | Style # | Page | Style Name | Style # | Page |
|------------------------------|--------------|------------|----------------------------|--------------|------------|
| Action Mirror | 8208-28..... | 69 | Diver Sculpture | 8149-10..... | 63 |
| Agile Elephant Clock | 8139-13..... | 43 | Double Heart Boxes | 8115-11..... | 21, 25 |
| Alastaya Jeweled Box | 8178-11..... | 27, 28 | Dragon Lamp | 8150-17..... | 5, 6 |
| Alastaya Jeweled Photo Frame | 8190-12..... | 44 | Dragonfly Box | 8165-11..... | 26 |
| Albert Bowl with Stand | 8111-21..... | 33 | Duque Candlestick | 8197-16..... | 18, 40 |
| Alligator Soap Dish | 8181-12..... | 35 | Eagle World Globe | 8105-13..... | 64 |
| Ally Alligator | 8114-10..... | 56 | Easel Floor Lamp | 8115-18..... | 19 |
| Aries Ram Head | 8172-10..... | 60 | Eclipse Wall Sconce | 8133-19..... | 17, 18, 71 |
| Artistic Elephant | 8116-10..... | 58 | Egg Stone Sculpture | 8118-10..... | 50 |
| Azure Mirror | 8250-28..... | 67 | Elephant Ride Table Lamp | 8122-17..... | 9, 10 |
| Balloon Lamp | 8135-17..... | 9, 10 | Enlightened Sconce | 8127-19..... | 15 |
| Bamboo Wine Holder | 8146-13..... | 39 | Egret Sculpture | 8152-10..... | 54 |
| Barker Bowl | 8135-21..... | 34 | Ferretti Mirror | 8159-28..... | 77 |
| Biomorphic Console | 8167-34..... | 71 | Fishy Coasters | 8108-12..... | 31 |
| Biomorphic Mirror | 8276-28..... | 71, 72 | Flora Lamp | 8174-17..... | 12 |
| Bird Branch Sculpture | 8231-10..... | 52 | Florentine Wall Bracket | 8155-14..... | 65 |
| Blakely Boxes | 8108-11..... | 22 | Forte Floor Lamp | 8106-18..... | 20 |
| Black Egg Sculpture | 8124-10..... | 50 | Frog Band | 8209-10..... | 59 |
| Bonita Mirror | 8170-28..... | 78 | Frog Prince Clock | 8126-13..... | 43, 46 |
| Brave Monkey Tissue Holder | 8114-12..... | 37 | Frog Prince Table Lamp | 8190-17..... | 5 |
| Breakout Mirror | 8204-28..... | 75 | Frog Tissue Holder | 8111-12..... | 38 |
| Brun Mirror | 8155-28..... | 73 | Gallant Mirror | 8112-28..... | 66 |
| Butterfly Desk Lamp | 8195-17..... | 8 | Gallery Tray | 8109-25..... | 30 |
| Butterfly Sconce | 8104-19..... | 16 | Game Bird Sculptures | 8201-10..... | 53 |
| Canova Mirror | 8171-28..... | 78 | Gandolfi Mirror | 8172-28..... | 75 |
| Capo Candleholder | 8162-16..... | 42 | Geometro Mirror | 8161-28..... | 73, 74 |
| Carl Egg on Stand | 8160-10..... | 46, 51 | Golden Goose Accessory | 8158-10..... | 54 |
| Cartouche Mirror | 8156-15..... | 72 | Gracie Vase | 8101-21..... | 45 |
| Casali Mirror | 8174-28..... | 78 | Griffen Sculpture | 8173-10..... | 62 |
| Castello Mirror | 8164-28..... | 77 | Harlequin Box | 8101-11..... | 22 |
| Celebration Box | 8163-11..... | 23 | Herringbone Box | 8132-11..... | 21, 25 |
| Cete Table | 8169-30..... | 41 | Historic Horse | 8192-10..... | 60 |
| Chinoiserie Chiffonier | 8135-51..... | 68 | Imperial Narwhal Tusk | 8283-10..... | 49 |
| Chirp Paperweight | 8225-10..... | 46, 52 | Jesters Paper Towel Holder | 8175-12..... | 38 |
| Cipriani Mirror | 8100-21..... | 70 | King Frog Accessory | 8234-10..... | 59 |
| Classique Table Lamp | 8299-17..... | 12 | Kneeling Elephant Box | 8164-11..... | 26 |
| Closs Cocktail Table | 8130-33..... | 55 | Koi Pond Tray | 8112-25..... | 30 |
| Collona Pedestal | 8105-23..... | 63 | Kong Table Lamp | 8211-17..... | 7 |
| Concerto Mirror | 8194-28..... | 67 | Ladybug Box | 8161-11..... | 26, 46 |
| Constance Bowl | 8128-21..... | 33 | Leaf Dish | 8149-12..... | 36 |
| Coralino Candlestick | 8199-16..... | 41, 42, 71 | Leaping Tiger | 8299-10..... | 61 |
| Cormorant Urn | 8126-21..... | 45 | Lion Fireplace Fender | 8149-13..... | 47 |
| Costello Box | 8135-11..... | 24 | Lion Pedestal | 8101-23..... | 64 |
| Cupid Sculpture | 8210-10..... | 62 | Lion Soap Dish | 8148-12..... | 35 |
| Dancer's Sculpture | 8222-10..... | 62 | Lotus Floor Lamp | 8122-18..... | 20, 57 |
| Dartmouth Table Lamp | 8193-17..... | 12 | Louis Trunk | 8150-13..... | 9, 47 |
| Decadent Lidded Vase | 8110-21..... | 45, 46 | Lucille Easel | 8111-13..... | 44 |

ALPHABETICAL LISTING

| Style Name | Style # | Page | Style Name | Style # | Page |
|----------------------------|---------|------------|-------------------------------|---------|--------|
| Mactau Lidded Bowl | 8169-21 | 34, 41, 71 | San Polo Mirror | 8166-28 | 76 |
| Magic Forest Box | 8189-12 | 27, 28 | Serenisima Floor Screen | 8106-27 | 48 |
| Mantling Bird Sculpture | 8169-10 | 53 | Server Monkey Wine Holder | 8125-12 | 39 |
| Marsh Table Lamp | 8192-17 | 8 | Shell Sconce | 8105-19 | 16 |
| Majestic Fireplace Screen | 8116-13 | 48 | Shell Floor Lamp | 8119-18 | 19 |
| Maze Box | 8143-11 | 24 | Shikki Candlestick | 8196-16 | 40 |
| Milan Mirror | 8157-28 | 66 | Snailbait | 8285-10 | 57, 58 |
| Mobius Sculpture | 8137-10 | 51 | Spark Fireplace Screen | 8120-13 | 47 |
| Monkey Book Sconce | 8111-19 | 15 | Sparkle Torchere Lamp | 8107-17 | 13 |
| Monkey Lamp | 8136-17 | 9, 10 | Splendid Tusk | 8107-10 | 49 |
| Mother's Pride Giraffes | 8180-10 | 60 | Stonely Box | 8119-11 | 24 |
| Nearside Polo Player | 8223-10 | 61 | Stonely Mirror | 8203-28 | 79 |
| NeoClassique Cheval Mirror | 8300-28 | 80 | Sunburst Floor Screen | 8107-27 | 48, 57 |
| Neo Table Lamp | 8143-17 | 11 | Sunburst Mirror | 8213-28 | 69 |
| Novella Set of 4 Mirrors | 8160-28 | 67, 68 | Susie Bull Accessory | 8288-10 | 61 |
| Octagon Tray | 8130-25 | 31, 32, 74 | Swan Bowl | 8104-21 | 34, 46 |
| Orpheus Table Lamp | 8258-17 | 11 | Tassel Table Lamp | 8102-17 | 7 |
| Oval Stone Sculpture | 8115-10 | 50 | Terrapin Wall Decor | 8145-14 | 65 |
| Parasol Sconce | 8119-19 | 15 | Torch Candleholder | 8168-16 | 42 |
| Parasol Monkey Lamp | 8141-17 | 5 | Torcello Mirror | 8165-28 | 77 |
| Parfait Umbrella Stand | 8127-13 | 44 | Tortoise Magazine Rack | 8112-13 | 37 |
| Parthenon Mirror | 8212-28 | 79 | Track Mirror | 8227-28 | 70 |
| Peacock Desk Lamp | 8189-17 | 8 | Trapezoid Tray | 8102-25 | 29, 30 |
| Peacock Sconce | 8106-19 | 17 | Traversi Mirror | 8129-28 | 73 |
| Pediment Mirror | 8108-28 | 70 | Tres Tray Chic | 8128-25 | 31 |
| Penny Penguin | 8102-10 | 46, 52 | Trigger Fish Accessory | 8291-40 | 55, 56 |
| Perch Table Lamp | 8149-17 | 11 | Turtle Wine Holder | 8109-12 | 39 |
| Phinthly Pedestal | 8104-23 | 63 | Twig Box | 8125-11 | 21, 25 |
| Pinnacle Obelisks | 8106-10 | 49, 74 | Twisted Crocodile Wine Holder | 8143-12 | 38 |
| Pinstripe Box | 8106-11 | 21, 22 | Twisty Sconce | 8100-19 | 16 |
| Polo Table Lamp | 8179-17 | 7 | Veccio Mirror | 8158-28 | 66 |
| Pride Dish | 8145-12 | 36, 46 | Victoria Sculpture | 8165-10 | 56 |
| Proudest Peacock Sculpture | 8167-10 | 53 | Votive Sun Candleholder | 8198-16 | 43, 71 |
| Pursuit Bookends | 8141-12 | 37 | Young Turtle Accessory | 8199-10 | 46, 58 |
| Pyramidal Mirror | 8205-28 | 75 | | | |
| Quatrefoil Mirror | 8292-28 | 69 | | | |
| Radiant Chandelier | 8118-19 | 17 | | | |
| Red Egg Box | 8110-11 | 23 | | | |
| Remy Sculpture | 8135-12 | 51 | | | |
| Reveal Bowl | 8124-21 | 33 | | | |
| Rococo Candelabra | 8166-16 | 40 | | | |
| Rock Table Lamp | 8104-17 | 13, 14 | | | |
| Rocky Turtle Accessory | 8139-10 | 54 | | | |
| Roi Soleil Jeweled Box | 8177-11 | 27, 28 | | | |
| Rowing Frog | 8163-12 | 46, 59 | | | |
| Safari Floor Mirror | 8102-28 | 80 | | | |
| Santa Croce Mirror | 8163-28 | 76 | | | |
| San Marco Mirror | 8167-28 | 76 | | | |



MAITLAND-SMITH

2020

Lighting & Accessories Catalog

Telephone 828-495-8235 • Fax 828-495-3021 • www.maitland-smith.com